



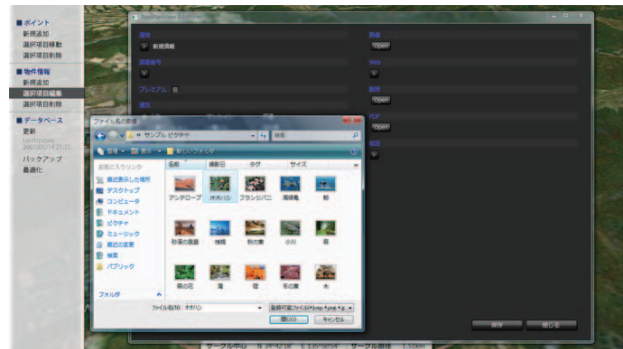
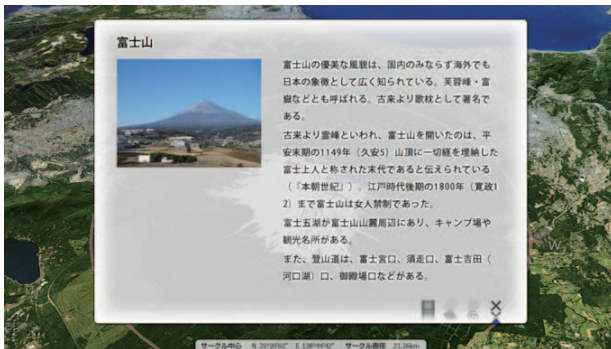
SpaceWalk is a "globe viewer", which can be used in public places such as museums, stations, airports, and enterprise showrooms. You can fly around the surface of the earth, which is rendered in 3D, and as you fly, you can view various information linked to places on the terrain.

Different height of viewpoint



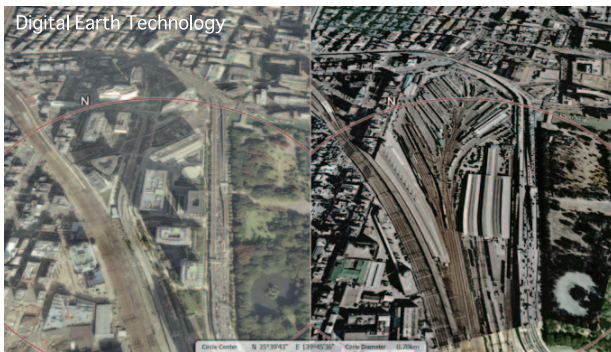
You can switch viewpoints to look at the earth differently ; from space to see the whole earth, or a birds eye view to see the 3D mountains.

Place the information you like



A description, still image, and a movie of the information point will be shown by clicking on it. The information can be added, modified, and deleted by the user.

Split the screen



Compare two images of different data sources from the same viewpoint.

Other functions

- Easy to browse around.
- Compatible with many different interface devices, such as joy-sticks and game-pads.
- Very fast and smooth image rendering(30~60fps).
- Place your own 3D models, such as buildings.
- Customizable upon request to accommodate your needs.

Distributor

Geoscience

Geoscience Co.,Ltd.

Kyoto head office

Maeda SN Bldg. 4F 518 Akinono-cho
Nakagyo-ku Kyoto 604-0847 JAPAN
TEL : +81-75-254-7890

Tokyo office

Cubic Bldg.6F 1-11-6 Taihei Sumida-ku
Tokyo 130-0012 JAPAN
TEL : +81-3-3623-8540

E-mail. esales@geoscience.co.jp
http://www.geoscience.co.jp

Developer



Mediaturge Inc.

1-18-11-7F Hamamatsu-cho, Minato-ku,
Tokyo 105-0013 Japan
Tel : +81-3-5408-5888
E-mail.info@mediatarge.jp
http://mediatarge.jp/